



## GENERAL USER CASES

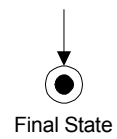
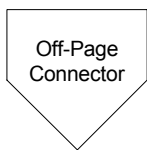
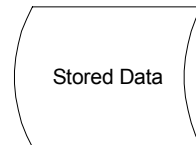
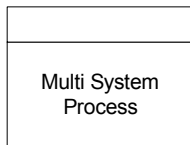
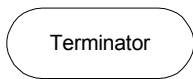
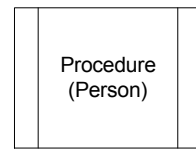
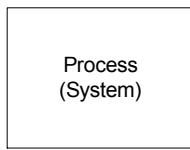
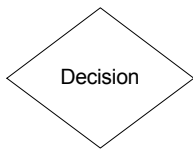
### TABLE OF CONTENTS

|  |                                     |
|--|-------------------------------------|
| <b>1. UNKNOWN USER LOGIN.....</b>                              | <b>3</b>                            |
| <b>2. KNOWN USER LOGIN.....</b>                                | <b>5</b>                            |
| <b>3. USER EDITS USER PROFILE .....</b>                        | <b>7</b>                            |
| <b>4. USER CHANGES THE DEFAULT LANGUAGE.....</b>               | <b>ERROR! BOOKMARK NOT DEFINED.</b> |
| <b>5. USER PRINTS A CLIENT-VIEW CONTENT.....</b>               | <b>ERROR! BOOKMARK NOT DEFINED.</b> |
| <b>6. USER PRINTS A MODULE VIEW CONTENT .....</b>              | <b>ERROR! BOOKMARK NOT DEFINED.</b> |
| <b>7. N/A.....</b>   | <b>ERROR! BOOKMARK NOT DEFINED.</b> |
| <b>8. USER EDITS A COMMUNICATION CENTER MESSAGE.....</b>       | <b>ERROR! BOOKMARK NOT DEFINED.</b> |
| <b>9. USER ADDS A MESSAGE TO THE COMMUNICATION CENTER.....</b> | <b>ERROR! BOOKMARK NOT DEFINED.</b> |
| <b>10. N/A .....</b>   | <b>ERROR! BOOKMARK NOT DEFINED.</b> |
| <b>11. USER EXPERIENCES SESSION INTERRUPTION...</b>            | <b>ERROR! BOOKMARK NOT DEFINED.</b> |

**General Use Cases**

**Stencil Key**

|                              |             |             |                  |
|------------------------------|-------------|-------------|------------------|
| Client<br>Digital Masterwork | Page 1 of 1 | Prepared by | Date<br>10/27/99 |
| Process<br>Stencil Shapes    |             | Approved by | Date<br>10/27/99 |



## 1. Unknown User Login

### Related Documentation

Admin Interface - User Admin - User Profile form and Customization options  
Learner Interface - Logon and Customization options

### Pre-condition(s)

- User opens the AIDLearn application.
- Admin and installation has provided the option of "unknown user profile". Otherwise, all users making it past logon are "known" because Admin adds them in User Admin facility before they logon. This use case therefore, is written showing the two alternate actions of the system with and without the option installed.

### Basic Path

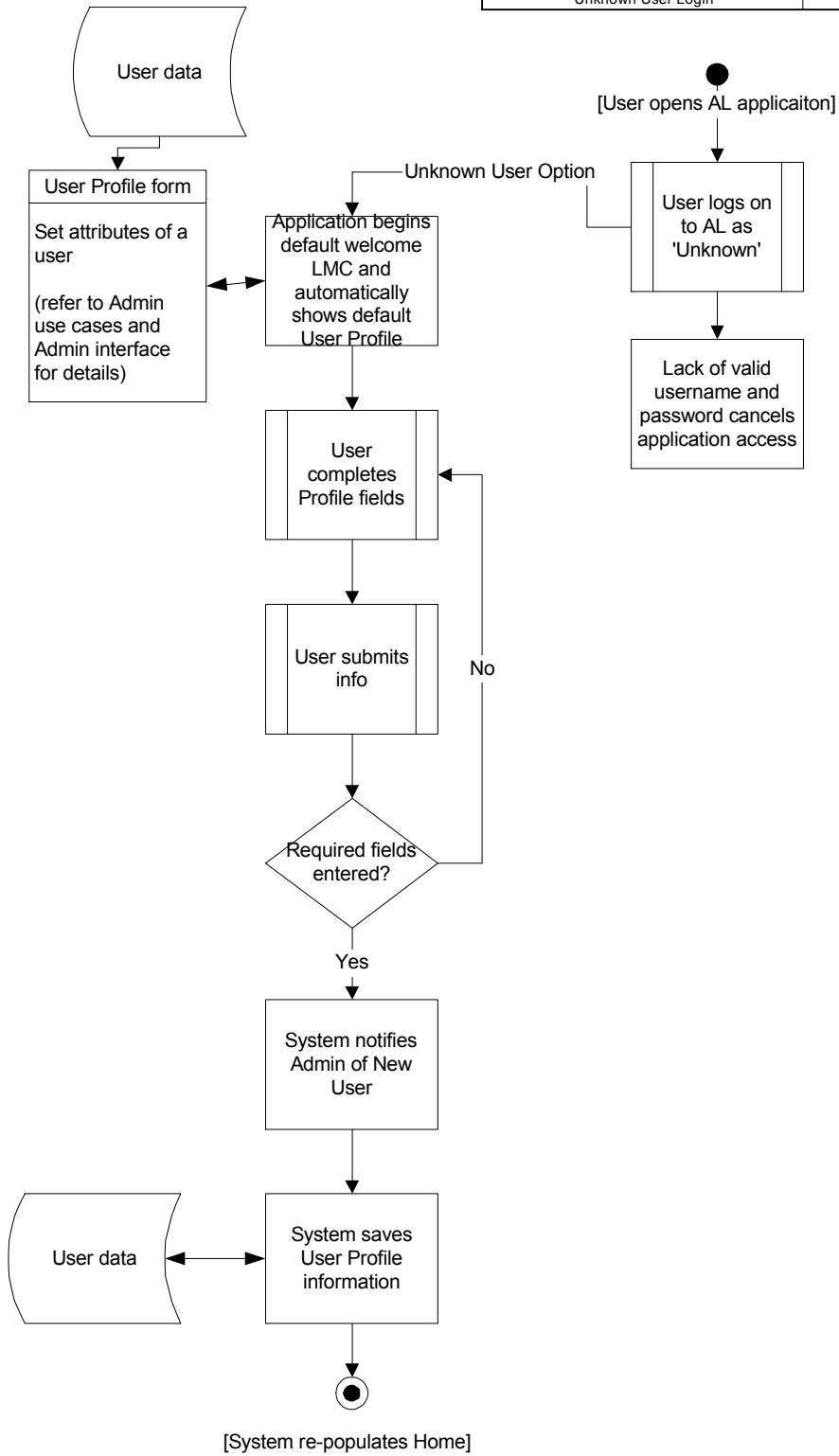
- 1) Unknown User logs on the AIDLearn.
- 2) Login dialog requires valid UserName and Password. Input of wrong or blank fields produces error message "Unknown user. Contact your Aidlearn Administrator at phone#, email#" -- system halts operations and cancels logon.
- 3) With option of "unknown user profile" loaded, User presses 'Unknown' or 'Guest' control.
- 4) System logs in "guest" date/time stamp tracked.
- 5) System resolves to a default Learner Management Center view and displays a User Profile form automatically.
- 6) System populates the User Profile form with default parameters, such as User Type = Learner, Role = General, Language = English, etc.
- 7) User completes the fields that are applicable to his/her unknown status, such as User Name, Password, E-mail address, etc.  
The only user type allowed for this automatic User Profile option is Learner, not Admin. Admin users must be added by Admin users to keep the integrity of the system security.
- 8) User clicks 'OK'.
- 9) If all required fields have been entered, then proceed to the next step. Else, the system will notify the User of any required fields that may have been left blank.
- 10) System saves the User Profile information to the database.
- 11) System notifies the Admin of New User.
- 12) Date/time stamp changed to new user's name/ID in tracking.
- 13) System re-populates the User's personal Home (LMC) with the training information applicable for the individual and his/her role(s).

### Post-condition(s)

- The User can view his/her User Profile from the Home page.
- The User can edit his/her User Profile (see *User edits User Profile* Use Case).

**General Use Cases**

|                               |              |             |                  |
|-------------------------------|--------------|-------------|------------------|
| Client<br>General Use Case    | Page 0 of 11 | Prepared by | Date<br>12/16/99 |
| Process<br>Unknown User Login |              | Approved by | Date<br>12/16/99 |



## 2. Known User Login

### Pre-condition(s)

- Learner initiates the AIDLearn application.

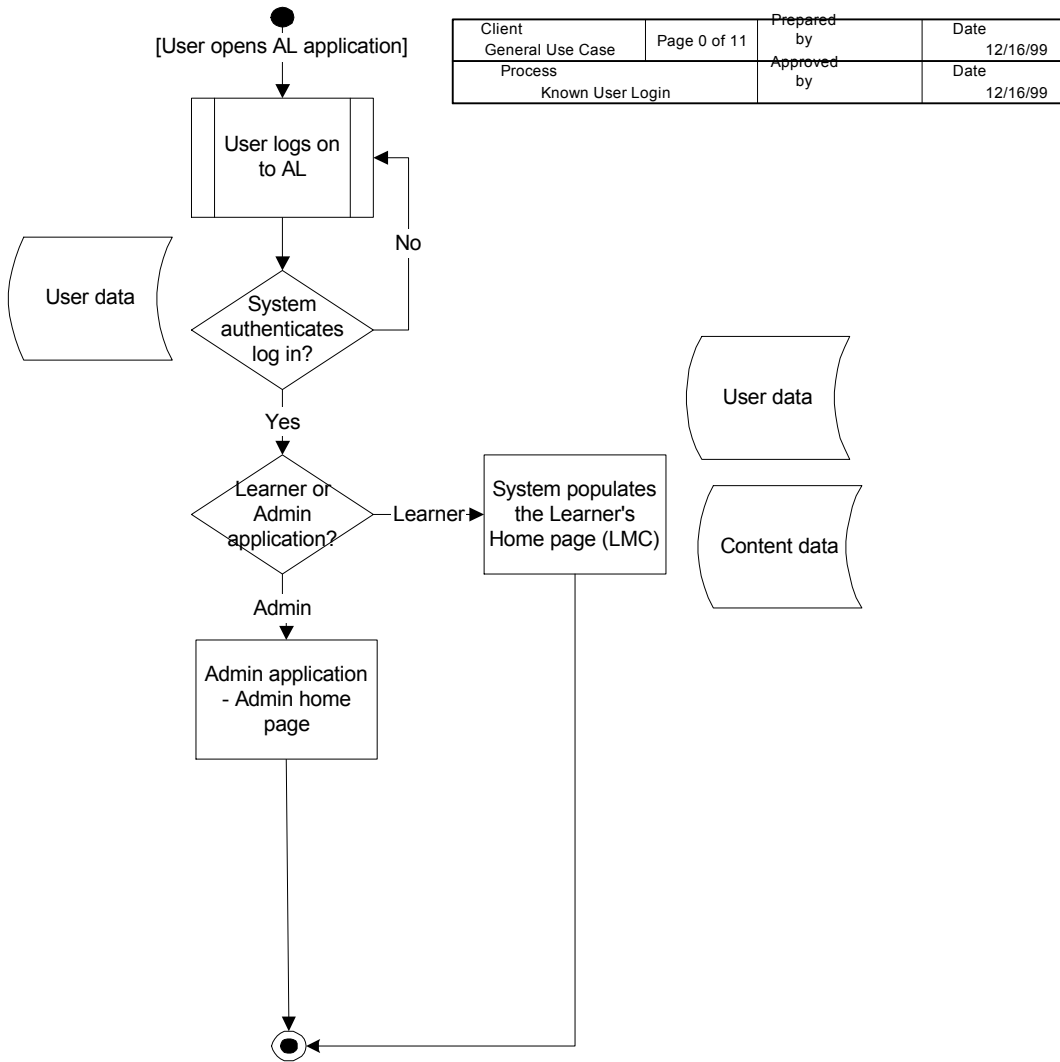
### Basic Path

- 1) Login screen appears.
- 2) User logs on to AIDLearn with User Name and Password.
- 3) For Admin user types, system asks User to specify Learner or Admin user type to determine which application to begin.
- 4) System authenticates the User's log in information, and logs in date/time session begins.
- 5) If the log in information is valid, then proceed to next step. Else, return to *step #1*.
- 6) System begins Learner or Admin application and populates the Home page (Learner or Admin Management Center) for the person identified by the log in information.
- 7) If Admin needs user to correct/update their User Profile (like new password), then Admin leaves user a message on top of Home page to initiate "edit profile" process (see use case 3 - Edit user Profile)

### Post-condition(s)

- The User can view his/her User Profile from the Home page.
- The User can edit his/her User Profile (see *User edits User Profile* Use Case).

General Use Cases



### 3. User Edits User Profile

#### Related Documentation

Admin Interface - User Admin - User Profile form and Customization options  
Learner Interface - Logon and Customization options

#### Pre-condition(s)

- User initiates the AIDLearn application.
- The log in information is validated.
- User chooses application and system populates the User's personal Home page **or** the User is navigating through the application and utilizes the control buttons.

#### Basic Path

- 1) User clicks on the User Profile link (from the Home page or from the User Interface).
- 2) System populates the User's personal User Profile with any information that has entered previously.
- 3) System shows fields in Edit mode for those fields deemed "editable" with authority allowed.
- 4) User modifies the User Profile by either entering new information into the fields, or selecting new information from a drop down list.
- 5) User clicks submit control.
- 6) If all required fields have been entered, then continue to next step. Else, return to *step #3* until all required fields are complete.
- 7) If the User has changed the default language (User Interface or Content), see *User changes the default language* Use Case. Else, continue to next step.
- 8) System saves the modified User Profile information to the database.

#### Post-condition(s)

- The User can view his/her modified User Profile from the Home page at any time.
- The database updates previous User Profile data.

#### Alternative Route(s)

- 1) At step #3, the User chooses to 'Cancel' and the system does not save any changes made to the User Profile.

General Use Cases

|                                    |              |             |                  |
|------------------------------------|--------------|-------------|------------------|
| Client<br>General Use Case         | Page 3 of 11 | Prepared by | Date<br>11/30/99 |
| Process<br>User edits User Profile |              | Approved by | Date<br>11/8/99  |

